

# Behavioral Health Career Fields

Do you like to help others?

Do you care about social problems?

A career in behavioral health empowers you to help others by positively changing their lives!

Behavioral health careers come from various fields, including: social work, psychology, counseling, psychiatry, nursing and medicine.

Social Work →

Psychology ↑

Counseling ↗

## Degree Options:

### Social Work

**Bachelor of Social Work (B.S.W.)\***  
**Master of Social Work (M.S.W.)\***  
Doctor of Philosophy (Ph.D.)

[socialwork.wvu.edu](http://socialwork.wvu.edu)

### Counseling

MH/AS Bachelor of Arts (B.A.)  
**Master of Arts (M.A.)\***  
**Master of Science (M.S.)\***

[appliedhumansciences.wvu.edu](http://appliedhumansciences.wvu.edu)

### Psychology

Bachelor of Arts (B.A.)  
Bachelor of Science (B.S.)  
**Doctor of Philosophy (Ph.D.)\***

[psychology.wvu.edu](http://psychology.wvu.edu)

\*Behavioral health license eligible in WV.

*Let's go.*



Apply Now.  
Request Info.  
Visit WVU.

[www.wvu.edu/admissions](http://www.wvu.edu/admissions)



WVU is an EEO/Affirmative Action Employer - Minority/Female/Disability/Veteran.

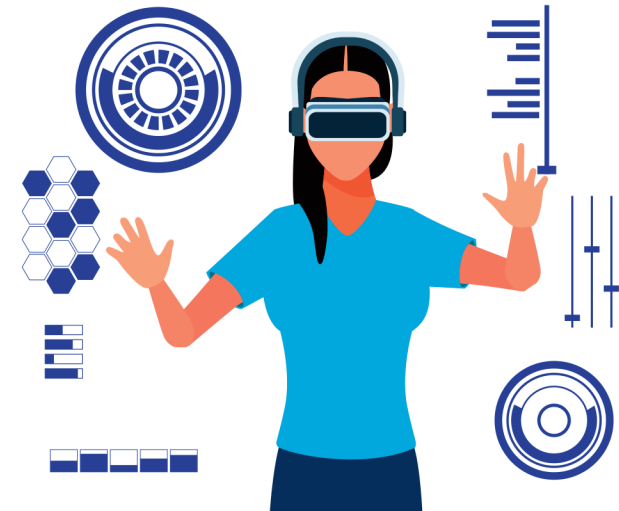
[playhigher.wvu.edu](http://playhigher.wvu.edu)



# PLAY HIGHER

## BEHAVIORAL HEALTH

### A Virtual Reality Experience



# Understanding BEHAVIORAL HEALTH

Behavioral health is therapy, but it is also so much more!

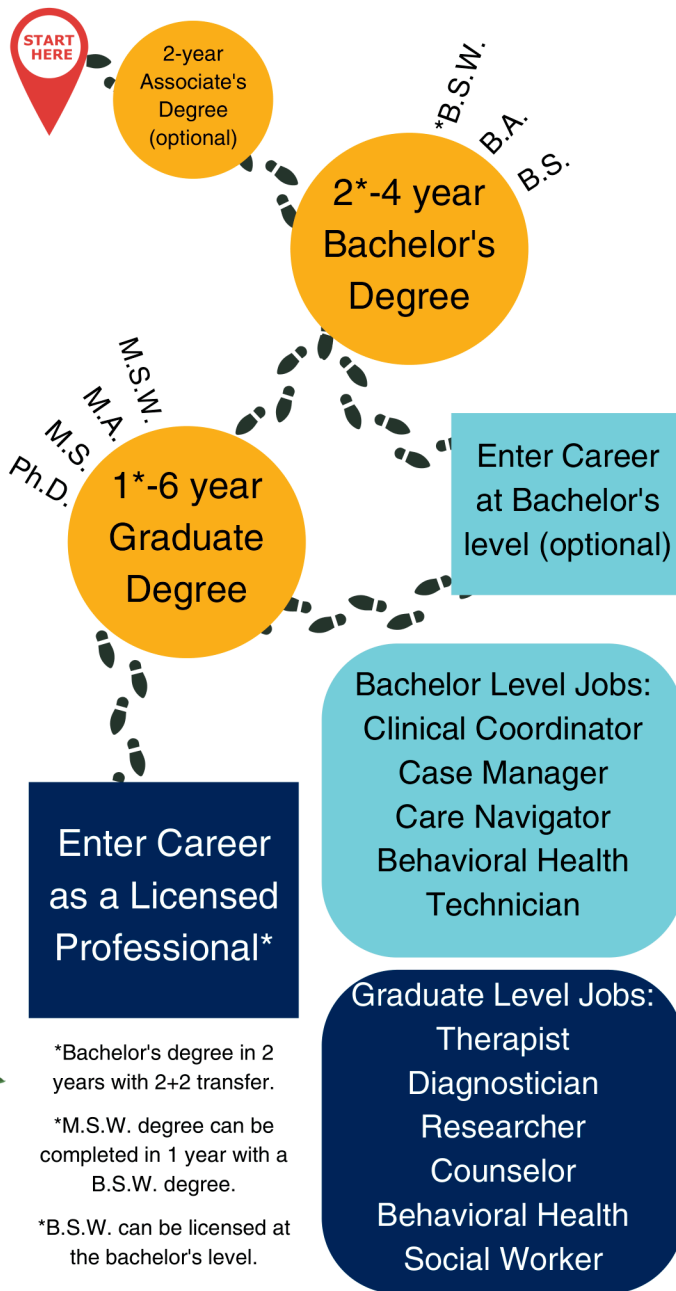
Behavioral health is the connection between **physical** health, **mental** health, **behaviors**, **mind**, **body**, **spirit** and **wellbeing**.

Just like everyone has physical health, everyone has behavioral health, too. And just like we see a doctor when we get sick or need a check-up, we see a **professional** for our behavioral health needs!

Behavioral health professionals treat mental health concerns like **depression**, **anxiety**, **trauma**, **ADHD**, alcohol or drug **addiction**, and much **more**.



## WHAT'S THE RIGHT PATHWAY TO YOUR CAREER?



## Did You Know?

Social workers are the largest group of professional behavioral health providers in the United States.

## Social Workers...

- Operate from a **person-in-environment** perspective.
- Center the **self-determination** of people.
- Are guided by a professional **Code of Ethics** and values:
  - Service
  - Social justice
  - Dignity and worth of the person
  - Importance of human relationships
  - Integrity
  - Competence
- View individuals from a **strengths perspective** which promotes **empowerment** of the individual.
- Are trained to intervene at the **micro**, **mezzo**, and **macro** levels.

# Social Work is BEHAVIORAL HEALTH